

How to update your Outgoing Mail Server (SMTP) - Apple Mail for Mac OS X

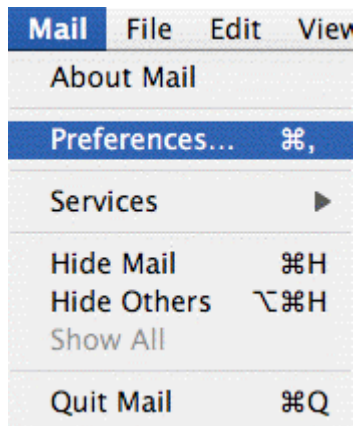
Follow this tutorial **if you can receive your email but cannot send mail**.

Use it as well to simply **make sure your email program is configured optimally**.

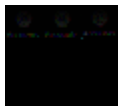
1 - Open **Mail**.



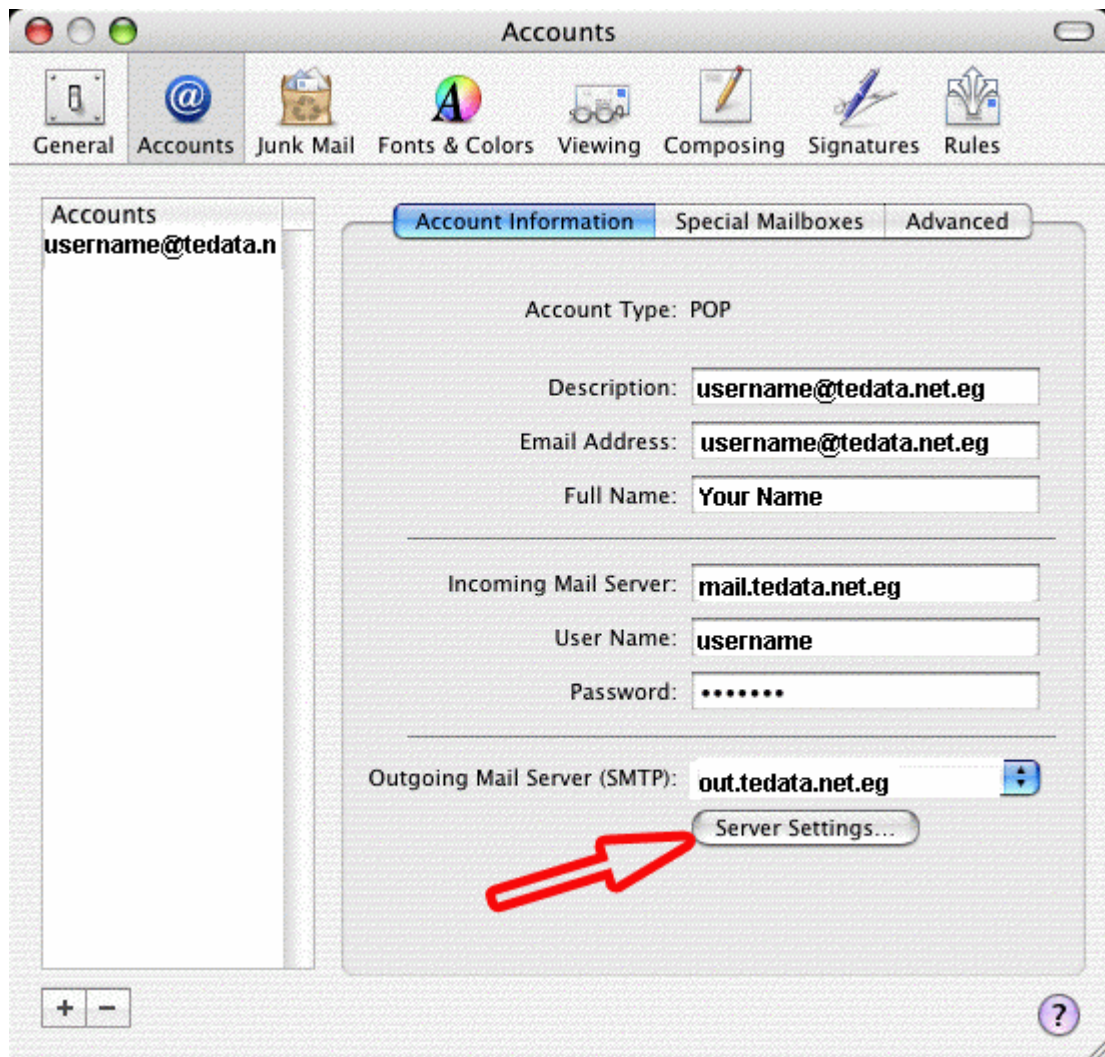
2 - From the **Mail** menu, choose **Preferences**.



3 - Click the **Accounts** icon.



4 - You should see the following screen:



In the **Description** field, you should see the name of your Email account (how Mac Mail refers to your account)

In the **Email Address** field, you should see your **full tedata email address**, for example username@tedata.net.eg

In the **Full Name** field, you should see your **display name** (it will appear on the From field when you send out messages)

In the **Incoming mail server** field, you should have: **mail.tedata.net.eg**

In the **User Name** field, you should see your **username**.

Your username is usually the first part of your tedata email address, for example *username* if your email address is *username@tedata.net.eg*.

In the **Password** field, you should see your Tedata email **password**.


Now here's the part related to your Outgoing Mail Server:

In the **Outgoing Mail Server (SMTP)** drop down box, you should have:

out.tedata.net.eg

If you have anything else in that box, please click on the **Server Settings** Button.

5 - A dialog box called **SMTP Server Options** will pop up.



In the **Outgoing Mail Server** field, type in: **out.tedata.net.eg**

Server port should be left to **25**

The checkbox called **Use Secure Sockets Layer (SSL)** should **NOT** be **checked**

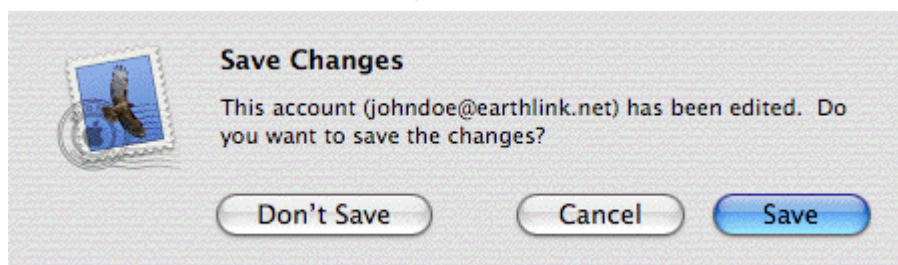
Click the arrow box on the **Authentication** pop-up list and choose **Password**

In the **User Name** field, type your tedata **username**

In the **Password** field, type your **password**

Click the **OK** button

6 - Close the **Accounts** window, and click the **Save** button.



You should now be able to send out messages.

TE Data

:: Copyright © 2007 . TE Data Support Team . All Rights Reserved ::

:: For Further Informations Call Us At 19777 ::

